

CBX 6000V

ADVANCED DOCUMENT PROCESSOR

The CBX 6000V is uniquely designed to combine high performance and flexibility in processing documents such as bank cheques and payment vouchers. Modularly designed to offer exceptional flexibility, the CBX 6000V is made up of 5 base modules – Feeder, Encoder, Scanner, Verification and Sorter modules; which can be easily connected to form a variety of configurations to suit your operational needs.

The implementation of this advanced processing system in your bank will increase your operational throughput and productivity by streamlining your processing methods into a single operation. It offers the most cost effective processing method which does not compromise processing efficiency because of its modularly designed concept which easily adapts to your evolving operational needs by adding or subtracting its modules accordingly.

The CBX 6000V is sleek, modern, and designed to fit into the operations of your back office. Its user-friendly keypad provides users operational ease as well as ensures maximum user experience.

HIGHLIGHTS

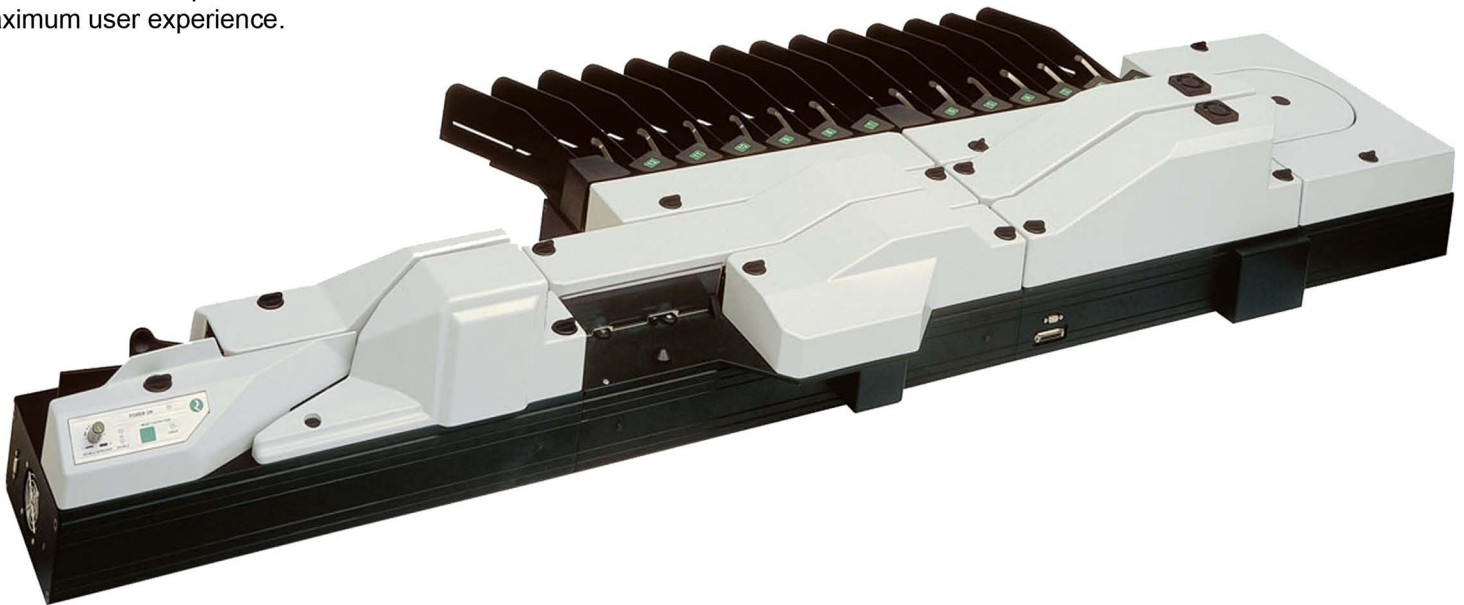
Modularly designed to provide flexible configuration to suit your operational needs

Modules can be easily added and/or subtracted

High quality data capture (Scanner Module)

Graphic printer to print personalized logo (Encoder Module)

Increases operational throughput and maximizes overall productivity



SALIENT FEATURES

Automatic feeder with single drop slot

MICR / OCR / Barcode reader

Viewing station

Encoder (front wheel type) for MICR and OCR

Front printer and Rear endorser

Front and Rear scanner

MICR validation

Sorter with 6 pockets

RS232-SCSI II interfacing provides total system integration

DOCUMENT FORMATS

WIDTH	min 110 mm	max 220 mm
HEIGHT	min 60 mm	max 110 mm
WEIGHT	min 80 g/sqm	max 120 g/sqm
THICKNESS	min 0.09 mm	max 0.14 mm

INTERFACE

Serial RS 232 standard
SCSI II standard
- for image acquisition

VOLTAGE

230 Vac	50 Hz
115 Vac	60 Hz

QUALITY TRADEMARKS



PERFORMANCE

OPERATION MODE	AMOUNT ENCODING	IMAGE ACQUISITION	PROCESSING SPEED*
AUTOMATIC	OFF	OFF	12 000 doc/hr
FAST DRIVEN	OFF	OFF	12 000 doc/hr
DRIVEN	OFF	ON or OFF	6000 doc/hr
AUTOMATIC	OFF	ON	10 000 doc/hr
FAST DRIVEN	OFF	ON	10 000 doc/hr
AUTOMATIC	OFF	ON or OFF	5000 doc/hr
DRIVEN	OFF	ON or OFF	5000 doc/hr
FAST DRIVEN	OFF	ON or OFF	Not Allowed

This table represents performance based on:

Document size = 160 mm
Encoding field = 13 characters

* Processing Speed represents hardware capability

Actual throughput is determined by the processing speed of the host computer and its application software

BASE MODULES

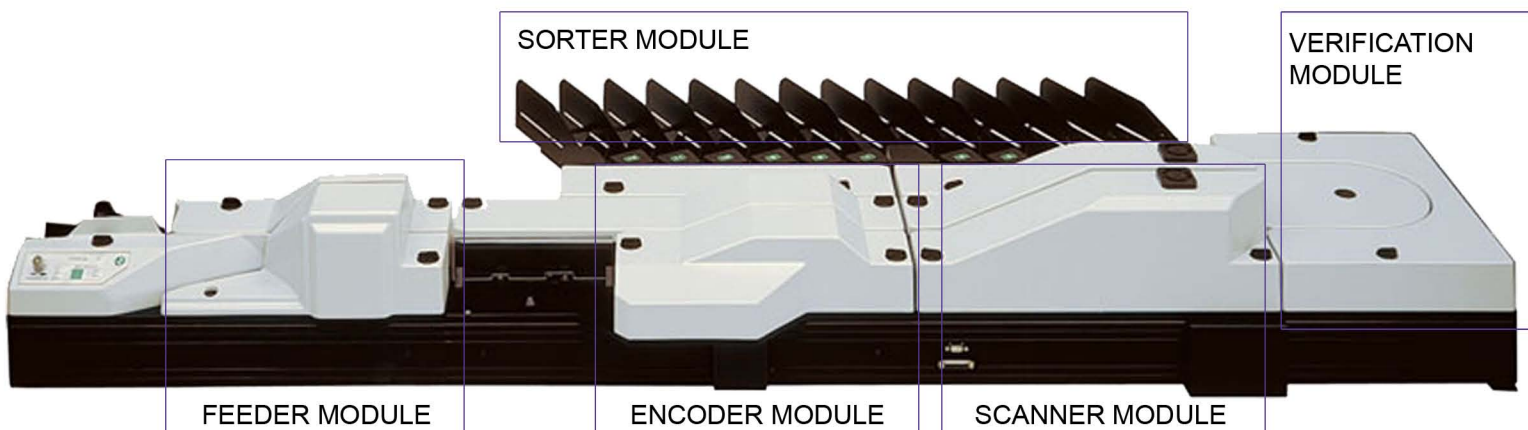
FEEDER	Capacity of up to 500 documents Single feed capacity, Double feed detector
ENCODER	High quality CMC7, E13B, OCRB encoding system Endoser
SCANNER	Front & Rear, Single or double-sided - Resolution: 200 dpi, 100 dpi (programmable) - Grey levels: 16 or Black & White
VERIFICATION	Additional MICR reader is an available option

SORTER

Available options:
Single pocket module
2 pockets module
6 pockets module

Capacity:
200 documents per pocket

Maximum no. of pockets:
24 (4 sorter modules)



CBX 6000V

TECHNICAL SPECIFICATIONS

Sorting station can be increased in units of 6-pockets.

Maximum no. of pockets: 24 pockets
(4 sorter modules)

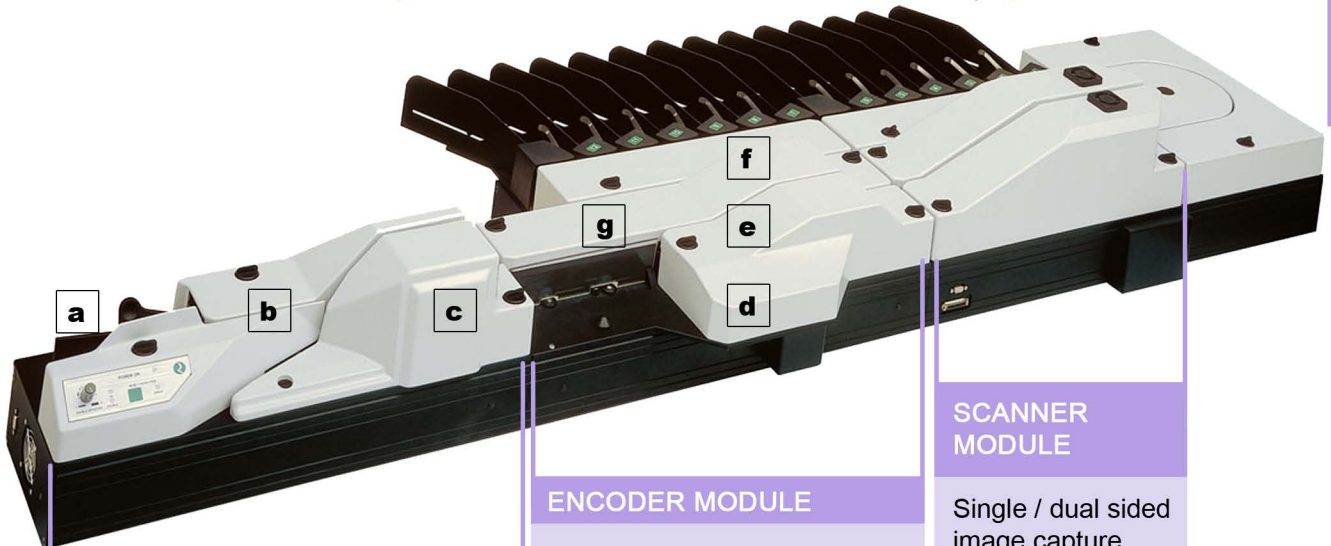
Sorter options:

- Single pocket module
- 2 pockets module
- 6 pockets module

MICR verifier
MICR reader (optional)

SORTER MODULE

VERIFICATION MODULE



FEEDER MODULE

Capacity 500 - 1500 documents
Single feed capacity
Double feed detection

Includes:

- a. Automatic feeder
- b. Hand feed slot to for single feed documents
- c. MICR reader (CMC7 / E13B)
OCR reader (OCRA / OCRB)
Bar code reader

ENCODER MODULE

High quality CMC7, E13B,
OCRB encoding system

Includes:

- d. Encoder for MICR code line
or OCR code line
- e. Endorser (printer)
 - Front & Rear rotary drum
 - *Max print area:*
 - 23 x 16mm + date print
 - 38 x 16mm w/out date print
- f. Back Endorser
 - Front & Rear dot matrix
9 needles printer
 - Character height: 3.175mm
- g. Viewing Station

SCANNER MODULE

Single / dual sided
image capture

Resolution:
200 dpi, 100 dpi

Grey Levels:
- 16 or
Black & White