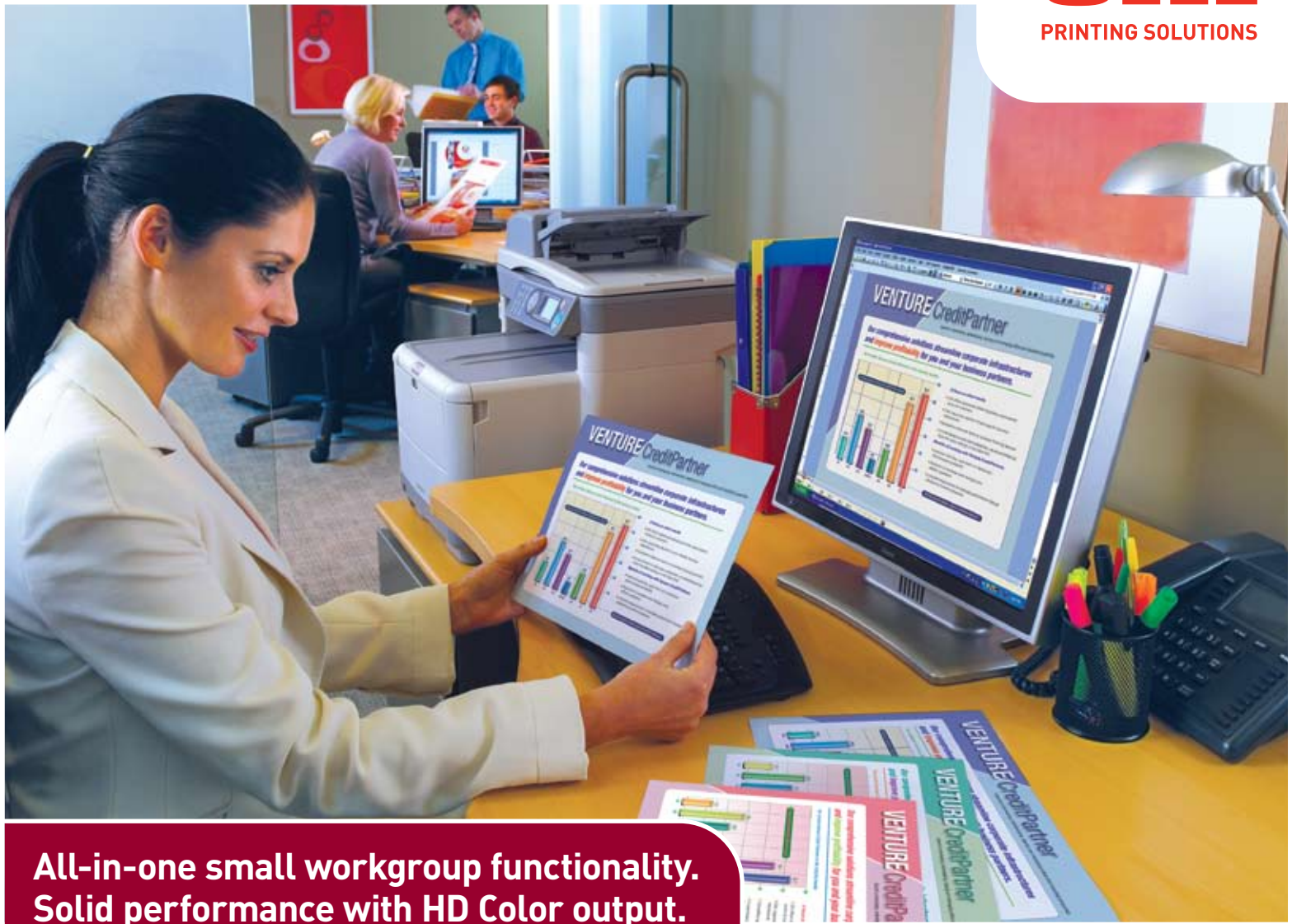


MC360 MFP

OKI
PRINTING SOLUTIONS



**All-in-one small workgroup functionality.
Solid performance with HD Color output.**





The compact, easy-to-use MC360 MFP: print, copy, scan and fax from a single device for increased productivity.

The MC360 Color MFP from OKI Printing Solutions is the perfect solution for individuals and small workgroups. It combines speed, reliability and ease of use with high-quality color and four-in-one functionality—all in an affordable desktop device with a footprint small enough to fit easily into your work space.

It has fast print and copy speeds—yet, with HD Color printing technology and a print resolution of up to 1200 x 600 dpi, there's no trade-off of speed for output quality. Multi-level printheads and microfine toner provide more detail, greater color depth, and reduced grain for breathtaking output even on ordinary office paper—while Auto Color Balance ensures color consistency across all jobs. Single Pass Color™ technology provides a straight paper path with fewer moving parts, allowing for smooth paper handling and higher speeds while ensuring greater reliability.

Versatile scan-to capabilities – Turn hard-copy documents into electronic files by placing them in the automatic document feeder (ADF) or directly onto the flatbed scanner, and scanning them in black & white or color.

Scan a document directly to a locally attached PC or to the shared directory on the network (without the need for additional software), to an e-mail address, to an FTP site, or as an attachment for a fax. Or simply insert a USB memory stick into the port conveniently located on the front of the unit, save your scan to the memory stick, and you're on your way in seconds.

A full-featured fax device – The MC360 MFP comes with a number of fax features found in more expensive units, including Tel/Fax auto switching, a telephone answering device (TAD) interface, speed-dial ID display, and generous fax memory. Its dual access functionality lets you scan faxes into memory while the unit is busy sending or receiving faxes.

Enhancing productivity – The MC360 MFP is quite user friendly. It's network-ready right out of the box and has an intuitive operator panel that's simple to use and a backlit LCD display that's easy to read.

It also comes with several useful software utilities: PaperPort® and OmniPage® from Nuance® to convert scans into workable, transportable digital files and provide feature-rich OCR capabilities; and hotkey functionality, to reduce common tasks to a single click.

With its standard multi-tasking functionality, you can perform two tasks at the same time for increased productivity.

And, with a duty cycle of up to 35,000 pages per month, this durable device can be relied upon to handle large daily print and copy volumes.

Expect more support – You can expect total support from your Authorized OKI Printing Solutions MFP provider.

If you need technical assistance, you can speak to a live expert based in North America, 24/7/365, by calling toll-free: **800.OKI.DATA** (800.654.3282).³

MC360 MFP Highlights:

- Print and copy at speeds up to 16 ppm in color, 20 ppm in black & white¹
- HD Color printing technology for outstanding print and copy quality
- Multi-tasking functionality standard, enabling two tasks to be performed at once (see chart)
- Full-featured analog fax, with dual access functionality
- 200-page fax memory (4 MB)⁴
- Multiple scan-to locations: PC, network, FTP, e-mail or USB memory stick
- Compact design to fit even the smallest environment
- 50-sheet automatic document feeder (ADF)
- 250-sheet standard/max paper capacity
- Banner printing capability on sheets up to 4 feet in length²
- Separate toner cartridges and image drums for greater cost efficiency
- 1-Year Overnight Exchange limited warranty³
- Live, toll-free technical support available 24/7/365³

¹ Published performance results based on laboratory testing. Individual results may vary.

² Larger files may require additional memory.

³ Available in the U.S. and Canada only.

⁴ Based on ITU-T Test Chart #1.

Perform two functions at once. Convert hard copies to digital files. Manage your document workflow. The MC360 MFP does it all.

With MC360 MFP Multi-Tasking Functionality:

You can do this... ...while doing this	Copy	Scan to Email/ Memory	Scan for Fax	Fax – Send	Fax – Receive	Print for Fax	Print
Copy					YES	YES ¹	YES ¹
Scan to E-mail/Memory					YES	YES ¹	YES ¹
Scan for Fax					YES	YES ¹	YES ¹
Fax – Send	YES ²	YES ²	YES			YES ¹	YES ¹
Fax – Receive	YES	YES	YES			YES	YES
Print for Fax	YES ²	YES ²	YES		YES ¹	YES ¹	YES ¹
Print	YES ²	YES ²	YES		YES	YES ¹	YES ¹

The user-friendly MC360 MFP puts its full functionality at your fingertips. The operator panel features a clear, organized array of navigation buttons, a backlit LCD display and numeric keypad. A USB port is conveniently located on the front of the unit and allows for scan-to-memory stick.

Document management made simple – The MC360 MFP includes software that lets you move between scan-to tasks with a single click, including Scan-to-Email, Scan-to-Folder and Scan-and-Print.



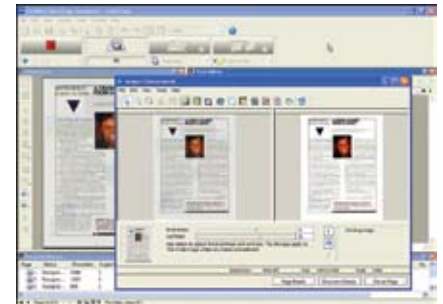
Desktop hotkey utility enables you to perform common tasks with single-click ease; customizable to meet the needs of your workflow environment.

PaperPort® software easily turns piles of paper and photos into PDF and JPEG files—using the MFP's scanner—and saves them to your computer for future use.



PaperPort from Nuance® is a scanning and document management application that turns hard-copy paper into digital content.

And OmniPage® optical character recognition (OCR) software quickly turns hard-copy office documents and forms into electronic files for easy editing, searching and sharing.



Nuance's OmniPage OCR software converts documents into editable electronic files, saving you time and increasing productivity.

The MC360 MFP at a glance

Multi-tasking: performs two tasks at the same time (see chart above)

Flatbed scanner: handles up to 8.5" x 11" documents on the glass and up to 8.5" x 14" via the Auto Document Feeder (ADF)

Scan-to-USB memory stick: convenient front port makes the process quick and easy

High Definition Color: printing technology that ensures breathtaking output, even on plain paper

250-sheet paper tray: fewer user interventions means greater productivity



Dual access: scan faxes into memory while the unit is busy sending or receiving faxes

50-sheet ADF: the capacity of the automatic document feeder increases user productivity

Numeric keypad: easily enter fax numbers, codes and quantities

Backlit LCD display: further simplifies navigation; enhances user productivity

Easy-to-access functionality: primary features are simple to locate and access

Single Pass Color™ technology: straight-through paper path allows for superior flexibility in paper handling

Compact, space-saving design: the small footprint of the MC360 MFP allows it to fit into most work spaces

¹ Data accepted; printing halted until 1st action is completed.

² Operation is accepted; scanning halted until 1st action is completed.

MC360 MFP

Specifications

Printer

- **Print Speed:** Up to 16 ppm color, 20 ppm black & white¹
- **Time to First Page:** As fast as 13 seconds in color, 11 seconds in black & white¹
- **Print Resolution:** 1200 x 600 dpi
- **Processor Speed:** 266 MHz
- **Duty Cycle:** 35,000 prints/copies per month
- **Connectivity:** USB v2.0 high-speed; 10/100 Base-T Ethernet (network)
- **Emulations:** Enhanced Windows® Printing (GDI)
- **Operating Systems:** Windows® Vista®/Vista x64, XP Home/Professional/x64, Server 2008 (x86/x64), Server 2003/2003 x64, 2000; Mac® OS X.3+
- **Fonts:** Through Host PC
- **Duplex (2-Sided) Printing:** Manual

Copier

- **Copy Speed:** Up to 16 cpm color, 20 cpm black & white¹
- **First Copy Out:** As fast as 23 seconds in color, 17 seconds in black & white¹
- **Copy Resolution:** Up to 600 x 600 dpi
- **Copy Scaling:** 25% to 400% in 1% increments; 13 pre-set scaling sizes
- **Copy Quantity Selection:** 1-99

Scanner

- **Scan Type:** Color and black & white flatbed
- **Scan Resolution:** Up to 4800 dpi
- **Scan Speed:** 300 dpi – 10 ppm color, 20 ppm black & white; 600 dpi – 5 ppm color, 10 ppm black & white
- **Scan-to-PC:** Create electronic file from hard copy original in PDF, TIFF or JPEG file formats (TWAIN scanning driver included; Windows compatible)
- **Address Book Management:** LDAP (Lightweight Directory Access Protocol)
- **Scan-to-Functionality:** Scan to e-mail with LDAP support; to USB memory stick; to FTP sites; to network; and to PC
- **Formats Supported:** PDF, TIFF, JPEG, BMP, PCX, GIF, TGA, PNG, WMF, EMF
- **TWAIN Driver:** Windows 2000 and higher
- **Networking Utilities:** MFP Network Tools – access features and settings of the MFP; set up Scan-to-FTP and Scan-to-E-mail; apply scanning restrictions; configure and manage multiple Scan-to-FTP profiles



Fax

- **Fax Modem:** 33.6 Kbps Super G3
- **Transmission Speed:** 3 seconds/page²
- **Fax Resolution:** Up to 200 x 400 dpi
- **Speed Dials:** 100 locations
- **Broadcast Transmissions:** Up to 100 locations
- **Fax Memory:** 200 pages² (4 MB)
- **Fax Functions:** Dual access (perform additional functions while sending/receiving), Tel/Fax auto switching, Telephone answering device (TAD) interface, Broadcasting, Manual transmission, Delayed transmission, Auto redial, Auto receive, Activity report (sending/receiving), Protocol report (for troubleshooting)

Document Management

- **Utility Suite:** Nuance® PaperPort® 11.2 SE, OmniPage® 4.2 SE, OKI LPR, Color Correct, Swatch Utility, Hotkey Utility, Network Card Setup Tool, MFP Setup Tool, TWAIN Driver, Fax Driver, Printer Driver, Job Accounting, PrintSuperVision

System Memory

- **Standard/Max Imaging RAM:** 128 MB/320 MB

Paper Handling

- **Scanner ADF:** Up to 50 letter/legal sheets (16 lb. – 28 lb.)
- **Paper Sizes (Min./Max.):** Main Tray from 4.1" x 5.8" to 8.5" x 14"; Multi-Purpose tray from 3" x 5" cards to 8.5" x 47.24" banners
- **Standard/Max Input:** 250 sheets via Tray 1; 1 sheet via Bypass Tray
- **Output Capacity:** 150 sheets
- **Paper Sizes:** Letter, Legal 13/13.5/14, Banner, Executive, A4, A5, B5, A6; Envelopes – C5, C6, DL, Monarch, COM 9, COM 10
- **Paper Weight:** Main tray 17 lb. – 32 lb. (64–120 gsm); Manual feed 20 lb. bond – 110 lb. index (75–203 gsm)

Environmental

- **Size (WxDxH):** 17.6" x 21.5" x 20.5" (44.7 cm x 54.6 cm x 52.0 cm)
- **Weight:** 63.9 lb. (29.0 kg)
- **Power Consumption:** Operating Normal 400W, Max 980W; Idle 110W; Power Save <30W
- **Acoustic Noise:** Operating (Printing/Scanning/Copying) <53 dB; Standby <39 dB

Warranty

- **System:** 1-Year limited warranty with Overnight Exchange³
- **Digital LED Printheads:** 5-Year limited warranty

For more information on the MC360 MFP Color Multifunction Product and supplies—including OKIcare warranty extensions—please call **1.800.OKI.DATA** (800.654.3282)³ or visit our website: www.okiprintingsolutions.com/us

¹ Published performance results based on laboratory testing. Individual results may vary.

² Based on ITU-T Test Chart #1.

³ Available in the U.S. and Canada only.

⁴ Based on ISO 19798. Printer ships with standard 1,300-page Color (CMY) and 1,500-page Black toner cartridges. High-capacity toner cartridges are available.

⁵ Based on 5% coverage.

⁶ Estimated life, based on 3 pages per job.

Ordering Information

Description	Part Numbers	
MC360 MFP, 120V (Multilingual)	62433701	
MC360 MFP, 230V (Multilingual)	62433702	
Options		
Memory:		
256 MB DIMM	70042901	
Supplies		
Standard Toner Cartridges:		
Cyan Toner Cartridge	1,300 pg. ⁴ /1,000 pg. ⁵	43459403
Magenta Toner Cartridge	1,300 pg. ⁴ /1,000 pg. ⁵	43459402
Yellow Toner Cartridge	1,300 pg. ⁴ /1,000 pg. ⁵	43459401
Black Toner Cartridge	1,500 pg. ⁴ /1,500 pg. ⁵	43459404
High-Capacity Toner Cartridges:		
Cyan Toner Cartridge	2,300 pg. ⁴ /2,000 pg. ⁵	43459303
Magenta Toner Cartridge	2,300 pg. ⁴ /2,000 pg. ⁵	43459302
Yellow Toner Cartridge	2,300 pg. ⁴ /2,000 pg. ⁵	43459301
Black Toner Cartridge	2,500 pg. ⁴ /2,500 pg. ⁵	43459304
Image Drum Kits:		
Cyan Image Drum Kit	15,000 pg. ⁶	43460203
Magenta Image Drum Kit	15,000 pg. ⁶	43460202
Yellow Image Drum Kit	15,000 pg. ⁶	43460201
Black Image Drum Kit	15,000 pg. ⁶	43460204
OKIcare Overnight Exchange Warranties³		
	U.S.	Canada
MC360 MFP 2-Year Warranty	38010802	38010812
MC360 MFP 3-Year Warranty	38010803	38010813
MC360 MFP Upgrade/On-Site	38010901	38010911
OKIcare® On-Site Warranties³		
MC360 MFP 2-Year On-Site	38011002	38011012
MC360 MFP 3-Year On-Site	38011003	38011013
Print Media		
Sheets Per Box		
Bright White Proofing Sheets: 8.5" x 11" (32 lb.)	500	52206101
SynFlex™ Paper (8.5" x 11" – Waterproof and Tear-resistant)	100	52205901
Premium Envelopes (size #10):	100	52206301
	500	52206302
Banner Paper (8.5" x 35.4")	100	52206002

Specifications are subject to change without notice.

Featured products may not be available in all countries. Please contact your local office for regional availability.

©2009 OKI Data Americas, Inc. OKI Reg. T.M., M.D., OKI Electric Industry Co., Ltd. Single Pass Color T.M. and design Reg. T.M., High Definition Color logo T.M., OKI Data Corp. Windows, Vista Reg. T.M., Microsoft Corp. Mac Reg. T.M., Apple, Inc. Nuance, PaperPort, OmniPage Reg. T.M., Nuance Communications, Inc. USB-IF T.M., Universal Serial Bus Implementers Forum, Inc.



OKI DATA AMERICAS, INC.

USA
2000 BISHOPS GATE BLVD.
MOUNT LAUREL, NJ 08054-4620
TEL: 800.OKI.DATA (800.654.3282)
FAX: 856.222.5320

CANADA
2735 MATHESON BLVD. EAST
MISSISSAUGA, ONTARIO L4W 4M8
TEL: 905.238.4250
FAX: 905.238.4421

LATIN AMERICA
2000 BISHOPS GATE BLVD.
MOUNT LAUREL, NJ 08054-4620
TEL: 856.231.0002
FAX: 856.222.5071

OKI DATA DE MÉXICO, S.A. DE C.V.
MARIANO ESCOBEDO, 748 8º PISO
COL. NUEVA ANZURES C.P. 11590
MÉXICO, D.F.
TEL: 55.5263.8780
FAX: 55.5250.3501

OKI DATA DO BRASIL INFORMÁTICA LTDA.
AV. ALFREDO EGÍDIO DE SOUZA ARANHA, 100
BLOCO C – 4º ANDAR
04726-170 – SÃO PAULO – SP – BRASIL
TEL: 11.3444.3500
FAX: 11.3444.3502

WWW.OKIPRINTINGSOLUTIONS.COM